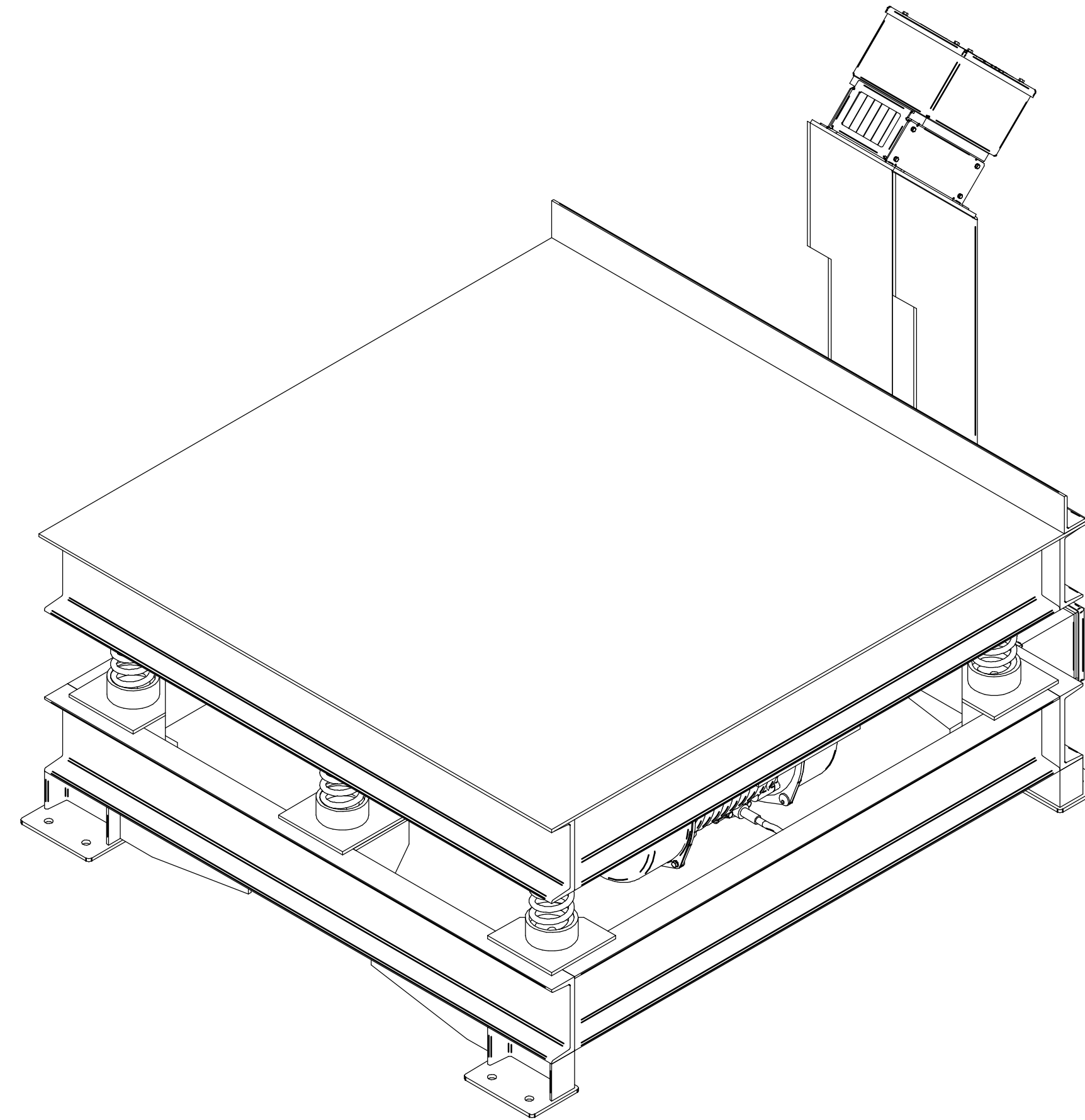
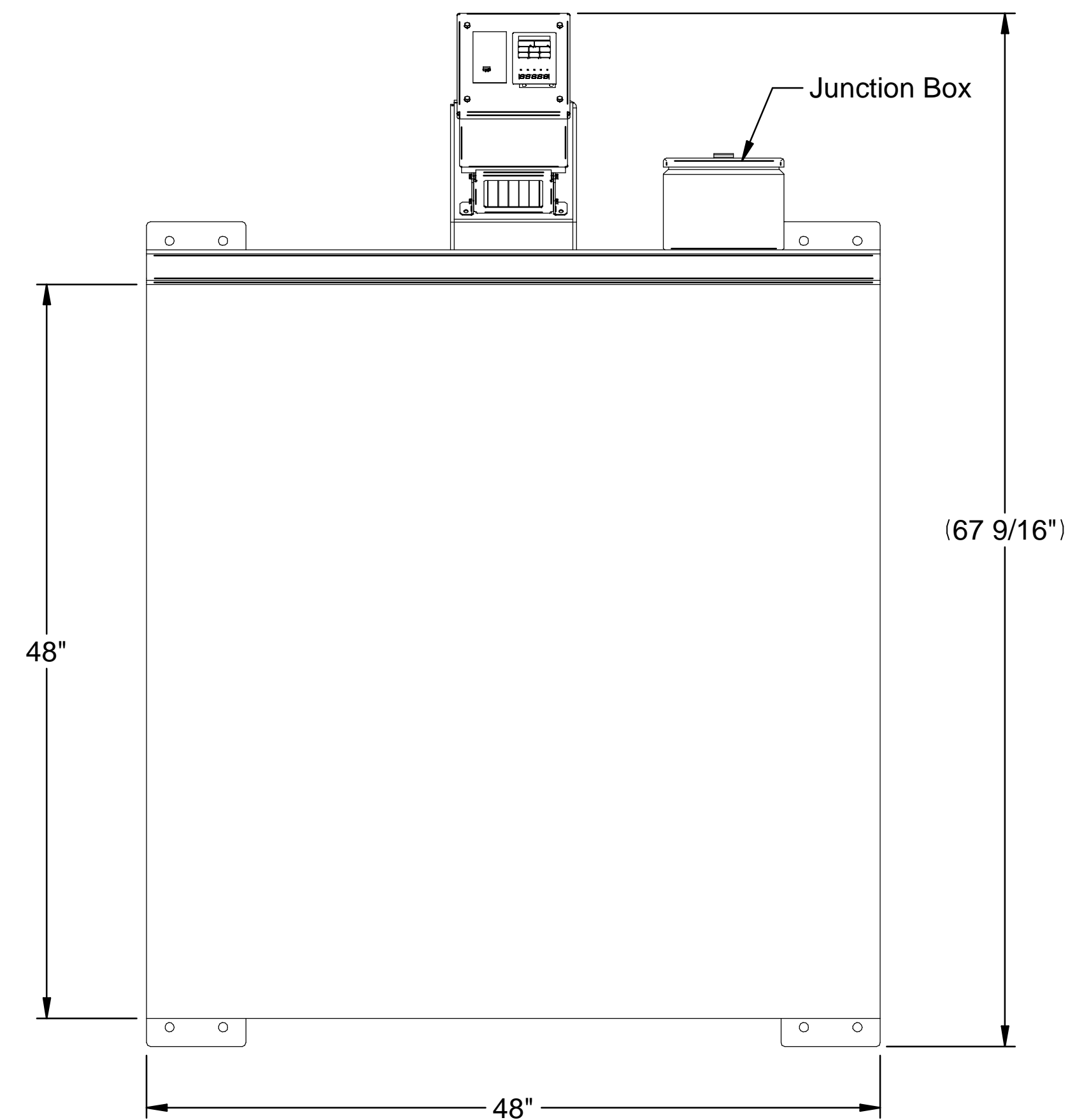


REVISION HISTORY			
REV	DESCRIPTION	DATE	ECR #



Vibrating Weight: ~1,200 lbs with Motors

**Cleveland Vibrator Proposal, Customer PO**

**CVC MODEL FA-4848-KEE-XX-X(2)**

Electric powered, flat deck, vibratory table  
Unit design and features have been outlined in the following:

**Design Load:** 5,000 lbs. Max  
250 lbs. Min.

**Product Description:** N/A (N/A) lb/ft<sup>3</sup>

**Features:**

**Vibrating Deck:** 48" wide by 48" long flat deck. **NOTE: Vibrating equipment requires 2" of clearance in all directions.**

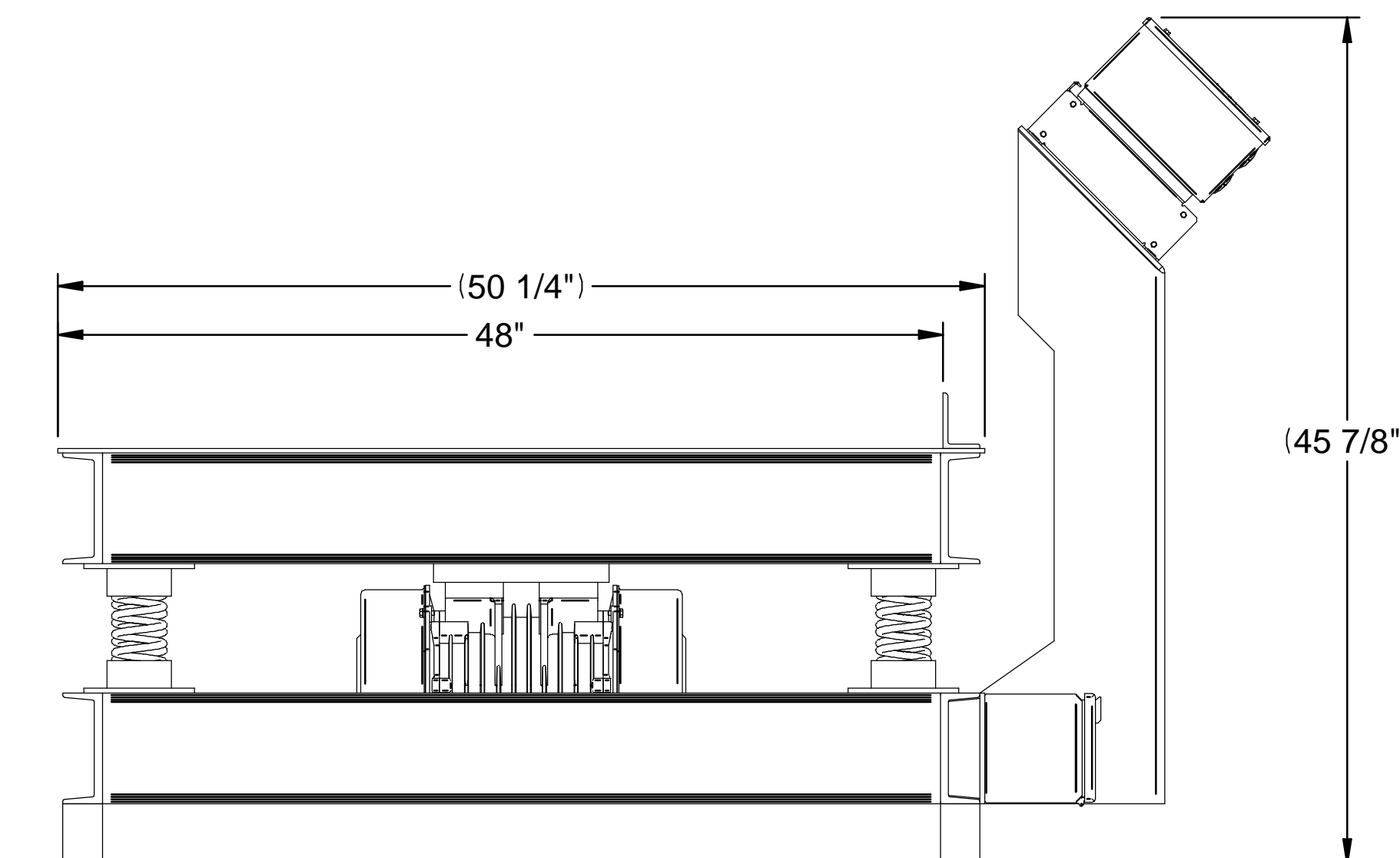
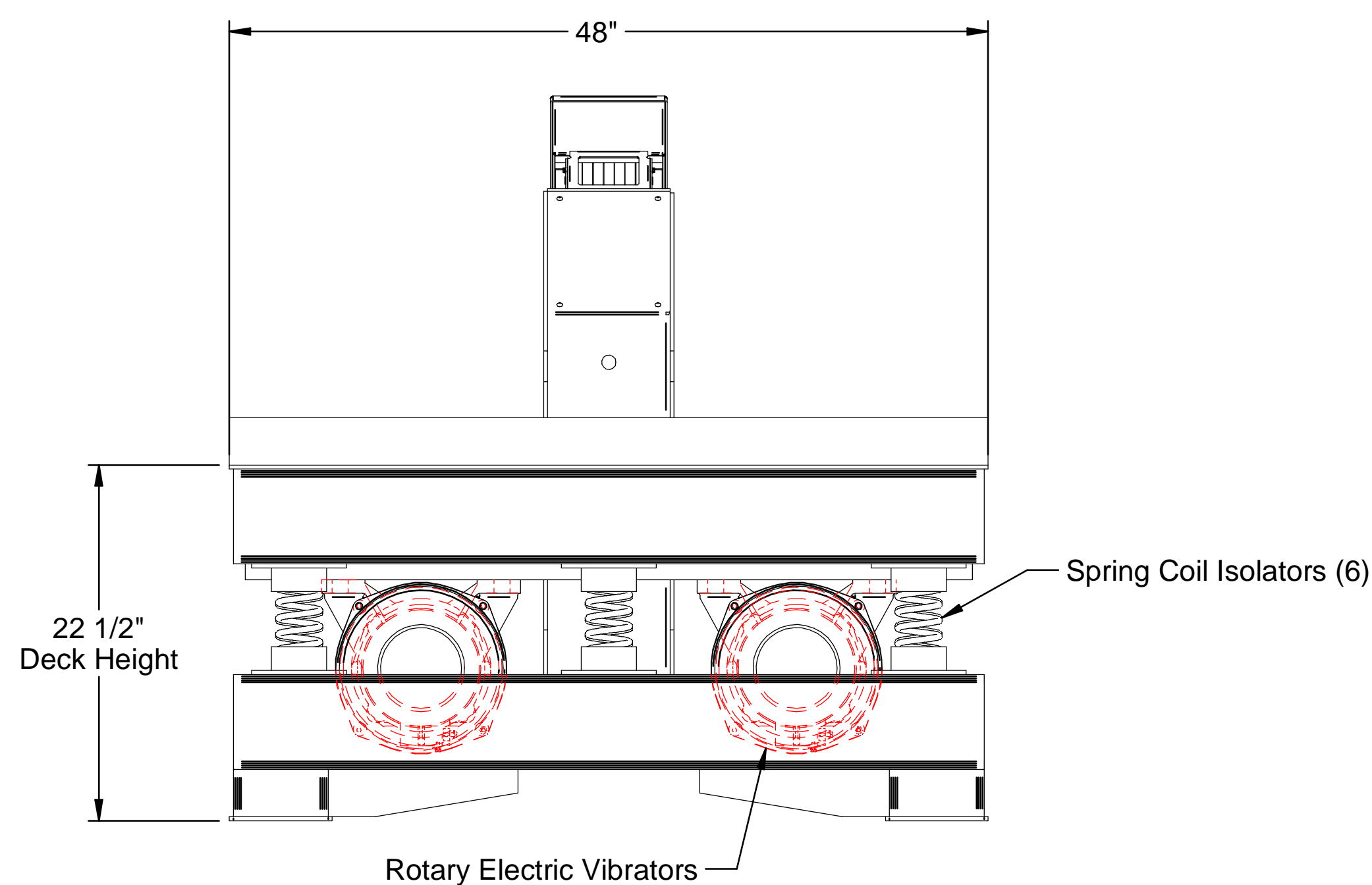
**Isolation:** (6) Spring Coil Isolators. Base support structure supplied by CVC. 22-1/2" Deck height.

**Drives:** Twin CVC Model KEE-23-2 (3600 RPM), KEE-24-4 (1800 RPM), KEE-18-6 (1200 RPM) or KEE-10-8 (900 RPM) Electric Motor Vibrators – TENV Design, IP66 protection structure, Fully Adjustable Eccentric Weights, **Below Mounted**

**Power:** 230 or 460/3/60 Volt-Phase-Cycle

**Drive Controls:** Variable Frequency Controller, **dual** thermal overload protection, 230 or 460/3/60 Volt-Phase-Cycle.

**Construction:** All mild steel, CVC **Type 3** Welds and Surfaces, Finish Vista Green Enamel.



**CLEVELAND VIBRATOR COMPANY**  
4544 Hockley Industrial Parkway  
CLEVELAND, OH 44109  
PHONE 216-241-7157 FAX 216-241-3480  
http://www.clevelandvibrator.com

DRAWN	nubaid	04/22/26	CUSTOMER:	Cleveland Vibrator Company	JOB:	80304
REVISED		4/22/2026	TITLE:	Electric Powered Vibratory Table		
DETAIL			MODEL:	SVT-803 Series	SCALE:	
ENG APPR			FILE NAME:	SVT-803 Series.dft		
UNLESS OTHERWISE SPECIFIED DIMENSIONS ARE IN INCHES ANGLES ±1° 2 PL ±1/8" 3 PL ±1/16"			SIZE:	D	MASS:	1550.91 lbm
Third Angle Projection			DWG NO:	S-XXXX	REVISION:	R-**

Drawings and any derivatives thereof are the exclusive property of CVC. All rights reserved. This drawing or any part thereof must not be reproduced in any form without prior written permission of CVC.