

# THE CLEVELAND VIBRATOR COMPANY

HK Technologies, Inc.

Quality Industrial Vibrators and Vibratory Equipment since 1923



**Cleveland  
Vibrator  
Company**

## **CVT-P Series Turbine Vibrators**

Acetal and Stainless steel

Five sizes currently available

*More force - less air - low noise*

- Unique to the market
- Smallest most compact turbine vibrators available
- Acetal body is well suited for food and chemical use
- Laser etched label, no chance for contamination
- Ideal for clean rooms and other demanding applications
- All exposed steel parts are #304 stainless steel
- Very low air consumption
- Start and run at low inlet air pressures, some as low as 5 psi
- Permanently lubricated bearings—require no lubrication
- Longer life than ball vibrators

*Call sales for more information.*

2828 CLINTON AVE. CLEVELAND, OH 44113

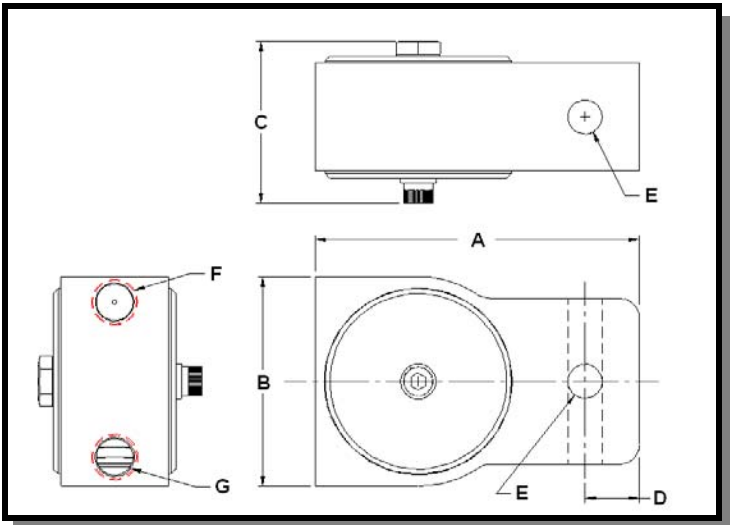
PHONE: (800) 221-3298 (216) 241-7157 FAX: (216) 241-3480

www.clevelandvibrator.com Email: sales@clevelandvibrator.com



**CVT-P Series Acetal Bodied Turbine Vibrators - Models**

Dimension	-1 in/cm	-10 in/cm	-30 in/cm	-50 in/cm	-60 in/cm
A	1-1/4 3.2	1-1/2 3.8	2-3/4 7	4 10.2	4-1/8 10.5
B	7/8 2.2	1-9/32 3.3	1-3/4 4.04	2-1/2 6.4	2-11/16 6.8
C	23/32 1.8	31/32 2.5	1-1/4 3.2	1-5/8 4	2-1/16 5.2
D	3/16 0.48	3/16 0.48	3/8 0.95	3/4 1.9	11/16 1.7
E	5/32 0.39	7/32 0.56	11/32 0.84	3/8 0.95	7/16 1.1
F	#10-32 UNF	#10-32 UNF	1/8 NPT	1/4 NPT	1/4 NPT
G	#10-32 UNF	#10-32 UNF	1/8 NPT	1/4 NPT	1/4 NPT
H*	#10-32 UNF	#10-32 UNF	N/A	N/A	N/A



\* Note: CVT-P-10, CVT-P-1 have two #10-32 UNF threaded holes in the end of the body opposite the inlet. The other units do not have this feature.

**@ 20 psi/1.4 bar**

**@ 40 psi/2.8 bar**

**@ 60 psi/4.1 bar**

**@ 80 psi/5.5 bar**

Model	Wt. lbs/kg	Un-Balance in-lbs cm-kg	Speed* vpm	Force lbf/N	Air Cnsmpt cfm/lpm	Speed* vpm	Force lbf/N	Air Cnsmpt cfm/lpm	Speed* vpm	Force lbf/N	Air Cnsmpt cfm/lpm	Speed* vpm	Force lbf/N	Air Cnsmpt cfm/lpm
CVT-P-1	0.04/.02	0.001/.0015	15970	7.2/32.0	.26/7.3	18500	9.7/43.1	.44/12.5	19250	10.5/46.7	.61/17.3	20000	11.4/50.4	.81/22.8
CVT-P-10	0.1/.05	0.002/.003	18,200	18.8/83.5	.49/13.8	19,400	21.4/95.0	.78/13.8	20,500	23.9/106.1	1.09/30.8	20,900	24.8/110.1	1.41/39.9
CVT-P-30	.54/.25	0.013/.017	8400	26/115.4	.96/27.2	9840	35.8/158.9	1.6/44.5	10580	41.3/183.4	2.2/61.2	11300	47.1/209.1	2.8/78.4
CVT-P-50	1.4/.62	.044/.052	5670	45.1/200.2	1.7/48.6	7220	65.1/289.0	2.8/80.2	7810	76.2/338.3	3.8/109.5	8070	81.4/361.4	4.9/138.4
CVT-P-60	1.24/.57	.12/.14	4800	78.5/348.5	1.3/35.9	5910	119.1/528.8	2.0/58.0	6280	134.5/597.2	2.8/79.6	6560	146.8/651.8	3.6/101.2

\*Data for this table obtained on 1000 pound laboratory test block. Frequency of vibration and resulting force output will decrease on a less rigid structure or mount.

## THE CLEVELAND VIBRATOR COMPANY

Quality Industrial Vibrators and Vibratory Equipment since 1923

2828 CLINTON AVE CLEVELAND, OH 44113

PHONE: (800) 221-3298 (216) 241-7157 FAX: (216) 241-3480

www.clevelandvibrator.com Email: sales@clevelandvibrator.com