



# THE CLEVELAND VIBRATOR COMPANY

Quality Industrial Vibrators and Vibratory Equipment since 1923

## Distinctive Products

Have a special need for a unique application? Ask us about these models, or call Randy in our sales department to discuss the solution for your particular need.

### 1125 VMSAC Poly-Coated Vibrator

This vibrator can be used in wash-down operations where there may be contaminants that attack the normal painted finish.



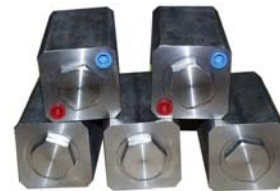
### RES-0.1 Electric Drum Packer Assembly

Employs a small single-phase vibrator mounted to a drum to vibrate material where use of an air-operated model is not possible.



### 1-1/4" SAM Stainless Steel Vibrator

All stainless steel vibrator with a modified inlet and exhaust ports for special applications.



### Stainless Steel VM 25 Miniature Vibrator

Our exclusive powerful little unit can be used in fine powder applications in the food and pharmaceutical industries.



### SA-EP Corrosion Resistant



### SAM Stainless Steel



2828 CLINTON AVENUE ■ CLEVELAND, OH 44113  
(800) 221-3298 ■ PHONE: (216) 241-7157 ■ FAX: (216)-241-3480  
[WWW.CLEVELANDVIBRATOR.COM](http://WWW.CLEVELANDVIBRATOR.COM) E-MAIL: [SALES@CLEVELANDVIBRATOR.COM](mailto:SALES@CLEVELANDVIBRATOR.COM)

**VBB-80 Nickel-plated**

For use in food applications for wash-down to eliminate any contaminants from a painted unit.

**VMS Nickel-plated**

This vibrator can be used in wash-down operations where there may be contaminants that attack the normal painted finish.

**VMR Stainless Steel**

**Single Impactor Nickel-plated**

**Special Pipe Brackets** can be designed to fit your particular-sized pipe or structure to accommodate any of our vibrator models.

