

ELECTROMAGNETIC VIBRATORS

Cleveland Vibrator CM Electromagnetic vibrators are ideal for discharging materials from small hoppers to 7 c.f. chutes and flow pipes. These units are suitable for 8 hours continuous operation in a 24-hour period.

The CM series vibrators feature a unitized armature assembly with strong fiberglass leaf springs and an encapsulated, high temperature coil to provide long service life.

The vibrators are constructed with an aluminum mounting base and a totally enclosed aluminum housing. All CM vibrators operate at 3600 vibrations per minute at 60 Hz or 3000 vibrations per minute at 50 Hz. A rheostat controller is available to manually adjust vibration intensity (amplitude). A frequency and amplitude controller for enhanced adjustability is also available.

Consult factory for specifications.

CM-10

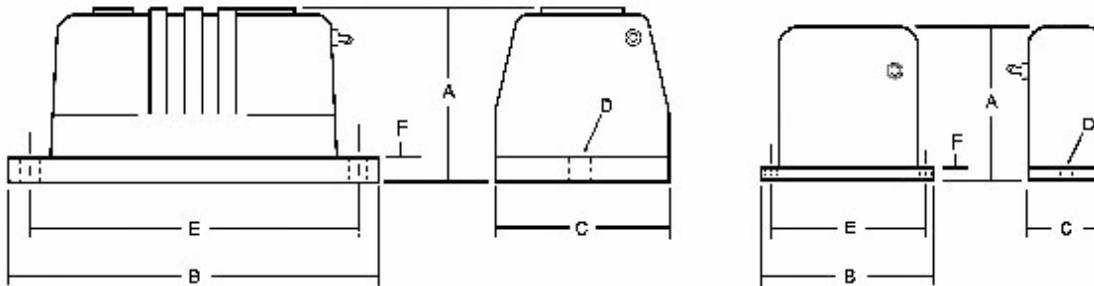


CM-5



NOW WITH ENCAPSULATED COIL FOR LONGER LIFE!

Consult factory for availability of 12 and 24 volt DC vibrators.



Model	A	B	C	D	E	F	voltage	max amps	frequency (VPM)	Force foot lbs.	weight (lbs.)
CM-5	3 1/2	4 1/2	2 1/2	17/64	4	1/4	110/1/60 220/1/50	.3 .15	3600 3000	10	2
CM-10	3 3/4	8 1/2	4	7/16	7 1/2	1/2	110/1/60 220/1/50	1.0 .5	3600 3000	30	8
CM-30	4 3/4	10	4 1/2	7/16	9 1/4	1/2	110/1/60 220/1/50	2.0 1.0	3600 3000	70	15



THE CLEVELAND VIBRATOR COMPANY 2828 CLINTON AVE. CLEVELAND, OH 44113
800-221-3298 216-241-7157 FAX: 216-241-3480 WWW.CLEVELANDVIBRATOR.COM