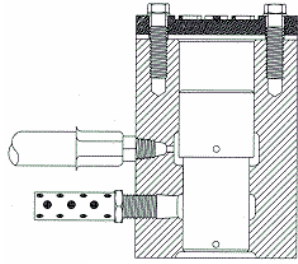
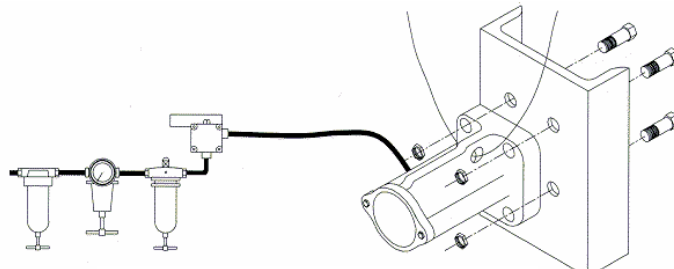


CLEVELAND VIBRATOR COMPANY—VMSAC & VMRAC

VIBRA-MIGHT AIR-CUSHIONED VIBRATOR



CUT AWAY



INSTALLATION AND OPERATING

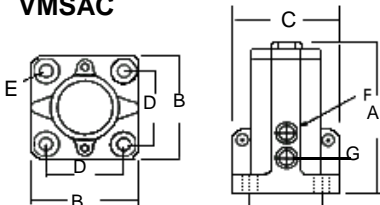
The VMSAC and VMRAC piston is cushioned on a pad of air at both ends of the stroke to ensure no metal to metal contact. The vibrator has a single-threaded exhaust port with exhaust muffler to reduce noise level. Additionally, the double-diameter piston guarantees the vibrator can start at any mounting angle with minimum air pressure and without the use of a piston

VMSAC has a one-piece, rugged ductile iron cylinder housing which decreases the weight of the vibrator. The body is cast with a provision for attachment of a safety cable. The unit is supplied complete with heavy-duty mounting fasteners and a

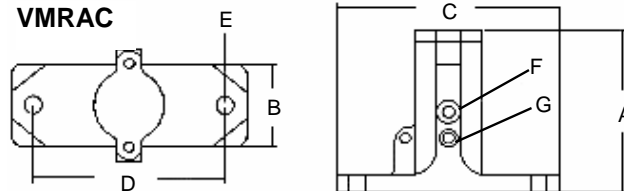
The information contained in the chart to the right is the result of many years of experience. It is a reasonably accurate approach to giving you quick information regarding vibrator sizing on a

SIZING CHARTS FOR BINS AND HOPPERS		
Bin Capacity lbs./kg	Approx. Skin Thickness of Bin in/mm	VMSAC Vibrator Size
200	1/8	1125
91	3.2	
700	1/8	1150
317	3.2	
ton/m. ton		
1	1/8-3/16	1200
0.9	3.2-4.8	
3	3/16-1/4	1300
2.7	4.8-6.4	
20	5/16-3/8	1350
18	7.9-9.5	
50	3/8	1400
45	9.5	
100	3/8	1500
90	9.5-12.7	

VMSAC



VMRAC



VMSAC ● VMRAC		Coated vibrators for non-lubricated applications are available.										
MODEL	PISTON DIA. in/cm	A in/cm	B in/cm	C in/cm	D in/cm	E in/cm	F in/cm	G in/cm	WT. lbs/kg	AIR CNSMP. scfm/lmp (lmp=liter per min) @ 60 psig 4.1 bar	FREQUENCY* (vibrations per min.) @ 60 psig 4.1 bar	
VMRAC 1125	1-1/4 3.2	5-7/16 13.8	3 7.6	5-3/4 14.6	4-1/2 11.4	1/2 1.3	1/4 .64	1/4 .64	6 2.7	6.0 170	4500	
VMRAC 1200	2 5.1	7 17.8	3-1/4 8.3	9-3/16 23.3	7-1/2 19.1	3/4 1.9	1/4 .64	3/8 1.0	14 6.4	11 312	2700	
VMRAC 1300	3 7.6	9-13/16 23.3	6 15.24	10-1/2 20.66	3-1/4 X 7-3/4 9.52 X 19.68	7/8 2.25	3/8 .95	1/2 1.3	28 13	15 425	1900	
VMRAC 1350	3-1/2 8.9	11-5/16 28.73	6 15.25	10-1/2 20.66	3-1/4 X 7-3/4 9.52 X 19.68	7/8 2.25	1/2 1.3	1/2 1.3	34 15	22 623	1575	
VMSAC 1125	1-1/4 3.2	4-11/16 11.9	3 7.6	3 7.6	2 5.1	3/8 1.0	1/4 .64	1/4 .64	6 2.7	6.0 170	4500	
VMSAC 1150	1 1/2 3.8	5-13/16 14.8	4-1/8 10.5	4-1/8 10.5	3 7.6	5/8 1.6	1/4 .64	3/8 1.0	13 5.9	8.0 227	3600	
VMSAC 1200	2 5.1	6-9/16 16.7	4-3/8 11.1	4-3/8 11.1	3 7.6	5/8 1.6	1/4 .64	3/8 1.0	14 6.4	11 312	2700	
VMSAC 1300	3 7.6	8-7/16 21.4	5-3/4 14.6	5-3/4 14.6	4-1/8 10.5	3/4 1.9	3/8 .95	1/2 1.3	28 13	15 425	1900	
VMSAC 1350	3-1/2 8.9	10.0 26.8	5-3/4 14.6	5-3/4 14.6	4-1/8 10.5	3/4 1.9	1/2 1.3	1/2 1.3	34 15	22 623	1575	
VMSAC 1400	4 10.2	12 30.5	8-1/2 21.6	8-1/2 21.6	6-1/4 15.9	1-1/4 3.2	1/2 1.3	3/4 1.9	99 45	30 850	1550	
VMSAC 1500	5 12.7	17 43.2	11 27.9	11 27.9	7-7/16 18.9	1-1/4 3.2	3/4 1.9	1 2.5	235 107	34 963	920	

*Frequency data obtained through testing under a no-load condition. Frequency will decline as load is increased.
NOTE: VMSAC also available in 1700 and 1900 sizes. Consult factory for details.