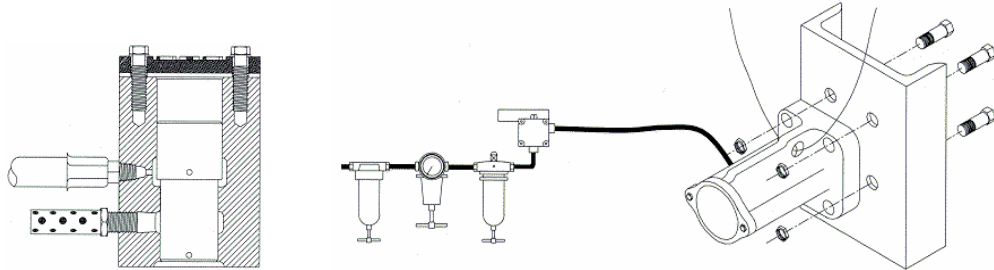




# CLEVELAND VIBRATOR Models VMS & VMR

METALLIC IMPACT VIBRATOR  
FOR HOPPERS, BINS, CHUTES AND PIPES

## INSTALLATION AND OPERATING KITS



### CUT AWAY

The VMS piston impacts directly against a channel mounting plate. The VMR piston impacts against part of the vibrator's base. A single exhaust port with port protector, prevents the entrance of dirt into the vibrator's exhaust cavity, prolonging the life of the vibrator. And, the double-diameter piston guarantees starting at any mounting angle with minimum air pressure, and without the use of a piston return spring.

Like VMSAC, VMS has a one-piece, rugged ductile iron cylinder housing which decreases the weight of the vibrator. The body is cast with a provision for attachment of a safety cable. Also, VMS is easily installed. It may be mounted on any appropriately sized mounting channel (available for sale), and it comes complete with heavy-duty mounting fasteners and a gasket.

SIZING CHARTS FOR BINS AND HOPPERS		
Bin Capacity lbs./kg	Approx. Skin Thickness of Bin in/mm	VMS Vibrator Size
700 317	1/8 3.2	1125
ton/m. ton		
1 0.9	1/8-3/16 3.2-4.8	1150
3 2.7	3/16-1/4 4.8-6.4	1200
20 18	5/16-3/8 7.9-9.5	1300
50 45	3/8 9.5	1350
100 90	3/8 9.5-12.7	1400
100 and up 90	3/4-1 19.1-25.4	1500

*The information contained in the chart to the right is the result of many years of experience. It is a reasonably accurate approach to giving you quick information regarding vibrator sizing on a hopper, bin, or chute.*

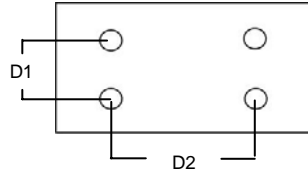
**THE CLEVELAND VIBRATOR COMPANY**  
2828 CLINTON AVE. CLEVELAND, OH 44113  
800-221-3298



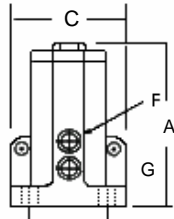
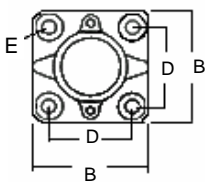
# CLEVELAND VIBRATOR Models VMS & VMR

METALLIC IMPACT VIBRATOR  
FOR HOPPERS, BINS, CHUTES AND PIPES

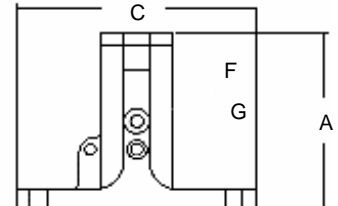
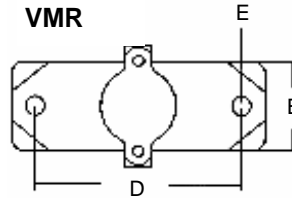
VMR 1300, 1350



VMS



VMR



VMS ● VMR		<i>Coated vibrators for non-lubricated applications are available.</i>									
MODEL	PISTON DIA. in/cm	A in/cm	B in/cm	C in/cm	D in/cm	E in/cm	F in/cm	G in/cm	WT. lbs/kg	AIR CNSMP. scfm/lmp (lmp=liter per min) @ 60 psig 4.1 bar	FREQUENCY* (vibrations per min.) @ 60 psig 4.1 bar
VMR 1125	1-1/4 3.2	5-7/16 13.8	3 7.6	5-3/4 14.6	4-1/2 11.4	1/2 1.3	1/4 .64	1/4 .64	6 2.7	7 198	4640
VMR 1200	2 5.1	7 17.8	3-1/4 8.3	9-3/16 23.3	7-1/2 19.1	3/4 1.9	1/4 .64	3/8 1.0	14 6.4	7.2 204	4500
VMR 1300	3 7.6	9-13/16 23.3	6 15.24	10-1/2 20.66	3-1/4 X 7-3/4 9.52 X 19.68	7/8 2.25	3/8 .95	1/2 1.3	28 13	21.5 609	3350
VMR 1350	3-1/2 8.9	11-5/16 28.73	6 15.25	10-1/2 20.66	3-1/4 X 7-3/4 9.52 X 19.68	7/8 2.25	1/2 1.3	1/2 1.3	34 15	21 595	2400
VMS 1125	1-1/4 3.2	4-11/16 11.9	3 7.6	3 7.6	2 5.1	3/8 1.0	1/4 .64	1/4 .64	6 2.7	7.4 210	4640
VMS 1150	1 1/2 3.8	6-3/8 16.2	4-3/8 11.1	4-3/8 11.1	3 7.6	5/8 1.6	1/4 .64	3/8 1.0	15 6.8	7.4 210	4000
VMS 1200	2 5.1	6-3/4 17.2	4-3/8 11.1	4-3/8 11.1	3 7.6	5/8 1.6	1/4 .64	3/8 1.0	15 6.8	10 311	4500
VMS 1300	3 7.6	8-7/16 21.4	5-3/4 14.6	5-3/4 14.6	4-1/8 10.5	3/4 1.9	3/8 .95	1/2 1.3	28 13	21.5 609	3350
VMS 1350	3-1/2 8.9	9-13/16 26.8	5-3/4 14.6	5-3/4 14.6	4-1/8 10.5	3/4 1.9	1/2 1.3	1/2 1.3	34 15	21 595	2400
VMS 1400	4 10.2	12 30.5	8-1/2 21.6	8-1/2 21.6	6-1/4 15.9	1-1/4 3.2	1/2 1.3	3/4 1.9	99 45	38 1076	2100
VMS 1500	5 12.7	17 43.2	11 27.9	11 27.9	7-7/16 18.9	1-1/4 3.2	3/4 1.9	1 2.5	235 107	60 1700	1150

\*Frequency data obtained through testing under a no-load condition. Frequency will decline as load is increased. **NOTE: VMS also available in 1700 and 1900 sizes. Consult sales for details.**

**THE CLEVELAND VIBRATOR COMPANY**  
2828 CLINTON AVE. CLEVELAND, OH 44113  
800-221-3298