

# CLEVELAND VIBRATOR

## Models LA, CBS & C-1175

### AIR-POWERED IMPACT VIBRATORS

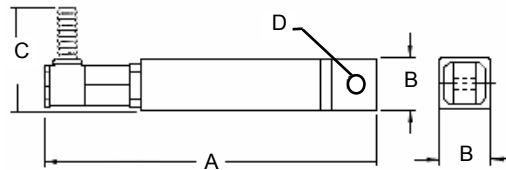
## Model LA



### SPRINGLESS DOUBLE-IMPACT MATCH-PLATE VIBRATOR

The LA eliminates maintenance worries and down time that results from vibrator spring breakage. LA vibrator design incorporates an end intake connection with built-in swivel action, and patented features provide trouble-

free operation. This vibrator is engineered to give long, uninterrupted service with lower operating costs. The LA is furnished with "el" type 3/8" (1.0 cm) hose fitting.



LA	<i>Coated vibrators for non-lubricated applications are available.</i>						
PISTON DIA. in/cm	A in/cm	B in/cm	C in/cm	D in/cm	air consmp. scfm/lpm @60 psig 4.1 bar	frequency* (vib per min) @60 psig 4.1 bar	WT. lbs/kg
5/8 1.6	7 9/16 19.21	7/8 2.22	2-1/8 5.4	3/8 1.0	3.8 108	14,100	1.5 0.7
3/4 1.9	7 1/16 17.84	1.0 2.54	2-3/16 5.56	3/8 1.0	5.4 153	13,600	2 0.9
1.0 2.5	8 1/8 20.64	1-1/2 3.8	2-3/8 6.03	1/2 1.3	5.8 164	11,700	3 1.4

**THE CLEVELAND VIBRATOR COMPANY**  
**2828 CLINTON AVE. CLEVELAND, OH 44113**  
**800-221-3298**

# CLEVELAND VIBRATOR

## Model LA, CBS & C-1175

### AIR-POWERED IMPACT VIBRATORS

#### HEAVY-DUTY MOLDING & CORE MACHINE VIBRATORS

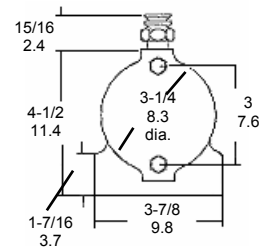
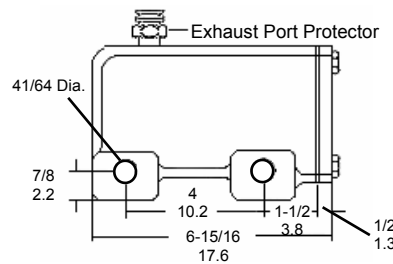
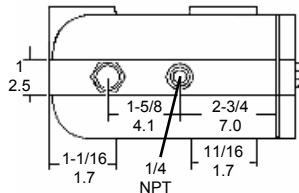
These rugged, powerful foundry-machine vibrators help all makes of molding and core machines operate at peak performance with an absolute minimum of maintenance.

C-1175 is intended for heavy-duty operations and features a springless

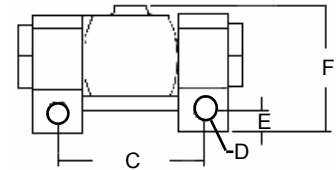
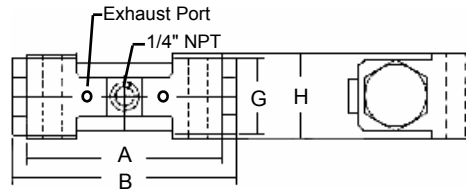
piston for positive starting and low maintenance.

CBS models are intended for use on light, dry molding and core machines.

*These vibrators are internally coated for enhanced performance!*



C-1175		AIR CNSMP. - scfm/lpm (lpm=liters per min)				FREQUENCY* (vib per min)				WT lbs/kg
VIBRATOR TYPE	PISTON DIA. in/cm	@20 psig 1.4 bar	@40 psig 2.7 bar	@60 psig 4.1 bar	@80 psig 5.4 bar	@20 psig 1.4 bar	@40 psig 2.7 bar	@60 psig 4.1 bar	@80 psig 5.4 bar	
metallic impact	1.75 4.4	2.7 76	7.2 204	9.25 262	15.8 447	1,800	2,225	3,000	3,300	17.0 7.7
air cushioned	1.75 4.4	3.0 85	8.0 227	11.0 312	16 453	1,620	2,000	2,700	2,900	17.0 7.7



CBS		air cnsmp - scfm/lpm				frequency* (vib per min)				WT. lbs/kg					
PISTON DIA in/cm	A in/cm	B in/cm	C in/cm	D in/cm	E in/cm	F in/cm	G in/cm	H in/cm	@20 psig 1.4 bar		@40 psig 2.7 bar	@60 psig 4.1 bar	@80 psig 5.4 bar		
1.0 2.5	3-15/16 10.0	4-13/16 12.2	2-7/8 or 3 7.3 or 7.6	33/64 1.3	31/64 1.2	2-1/2 6.4	1-1/4 3.2	1-13/16 4.6	.08 23	2.0 5.7	3.0 85	4.5 127	8,700 9,800	11,000 12,200	3.0 1.4
1-1/4 3.2	5-3/8 13.6	5-7/8 14.9	3-3/4 or 4 9.5 or 10.2	33/64 1.3	31/64 1.2	3-1/16 7.8	1-5/8 4.1	2-1/4 5.7	1.0 28	3.0 85	5.0 142	7.0 198	4,000 6,000	7,600 8,600	6.0 2.7

\*Frequency data obtained through testing under a no-load condition.  
Frequency will decline as load is increased.

**THE CLEVELAND VIBRATOR COMPANY**  
**2828 CLINTON AVE. CLEVELAND, OH 44113**  
**800-221-3298**