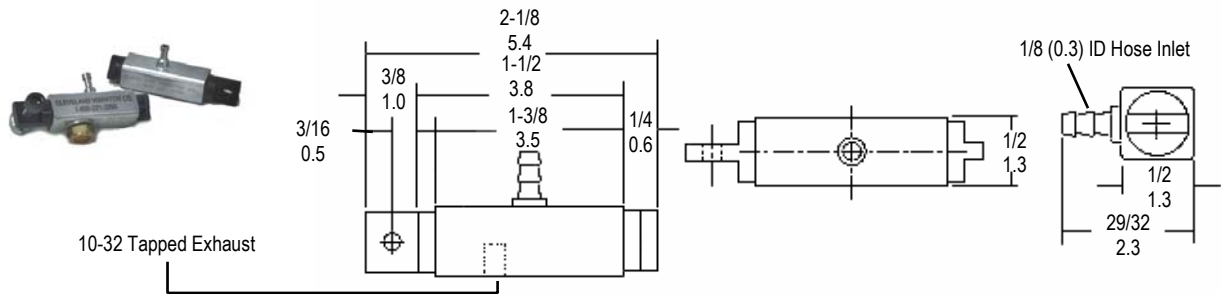


CLEVELAND VIBRATOR Models VM-25 & PMA

VM-25 MINIATURE AIR VIBRATOR



The VM-25 miniature air vibrator produces 16,000 vibrations per minute while only consuming 2.0 SCFM (57 lpm) of compressed air at 80 psig (5.4 bar).

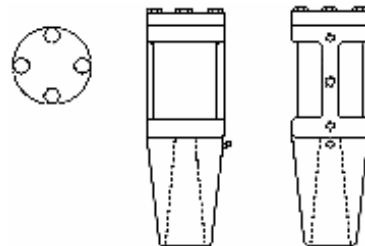
Its size and high frequency vibration make the VM-25 excellent for auto-

mated parts track vibration. It can also be used to promote the free flow of materials from small, thin-skinned (minimum 28 gauge) bins and hoppers up to 2 cubic feet in (57L) capacity. They can be supplied with a muffler to pre-

vent contamination and reduce noise level. An air-cushioned version, VMAC-25, will further reduce noise level, but at a reduced force output.

Normal output is 15 lbs.

PMA RAPPER



Model PMA rappers are designed for electrostatic precipitator applications. They have proven to be most economical, yet effective devices for these difficult applications. They produce higher frequencies while consuming less air than similar products. The PMA features a tapered mount that conforms to most rapper shaft and adapter designs. These vibrators are internally coated for enhanced performance.

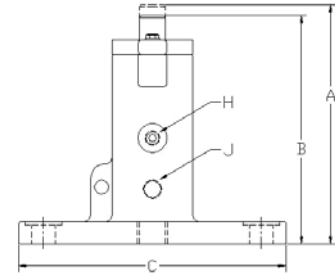
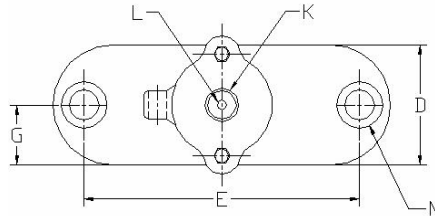
The PMA's technical data is as follows: length 13" (33.0 cm), diameter 4.5" (11.4 cm), piston diameter 3" (7.6 cm), inlet port 3/8" NPT, output ports (2) two 1/2" (1.2 cm), weight 40 lbs. (18 kg), frequency 3000 VPM, air consumption 8.3 SCFM (235 lpm) and normal operating pressure 20 to 40 PSI (1.4 to 2.7 bar).

Models FEP & VMRAC-EP

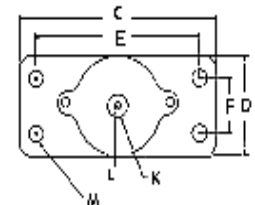
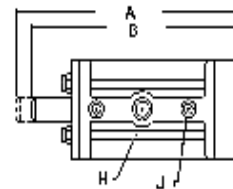
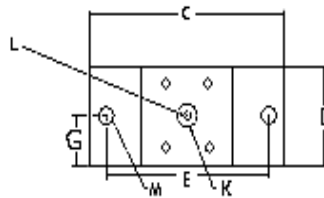
Models FEP and newer-model VMRAC-EP vibrators feature a specially machined "extended piston". The piston extension has a threaded portion enabling it to be

secured to the object receiving or transmitting vibration. They can also be used as simple rappers with or without a rubber bumper attached to the end of the piston extension.

These vibrators are internally coated for enhanced performance. The VMRAC-EP has the same basic design features as our Model VMRAC.



VMRAC-EP		<i>These models can also be supplied with square bases, Model VMSAC-EP</i>															
MODEL	Piston Dia. in/cm	A in/cm	B in/cm	C in/cm	D in/cm	E in/cm	F in/cm	G in/cm	H in/cm	J in/cm	K in/cm	L in/cm	M in/cm	air consmp. scfm/lpm @60 psig 4.1 bar	frequency* (vib per min) @60 psig 4.1 bar	WT. lbs/kg	
1125	1 1/4 3.2	6-3/4 17.1	6.0 15.2	5-7/8 14.9	3.0 7.6	4-1/2 11.4	n/a	1-1/2 3.8	1/4 0.6	1/4 0.6	1/2 1.3	1/4-20	11/16 1.7	7.2 204	3000	8 3.6	
1200	2.0 5.1	9-3/4 24.7	9.0 22.8	9-3/16 24.2	3-1/4 8.2	7-1/2 19.0	n/a	1-5/8 4.1	1/4 0.6	3/8 1.0	1.0 2.5	3/8-16	13/16 2.1	10 283	2700	15 6.8	
1300	3.0 7.6	11-1/2 29.2	10.0 25.4	8-5/8 21.9	4.0 10.2	7.0 17.8	2-3/8 6.0	13/16 2.1	3/8 1.0	1/2 1.3	1.0 2.5	3/8-16	13/16 2.1	19 538	2300	32 15	



FEP		<i>Coated vibrators for non-lubricated applications are available.</i>															
MODEL	Piston Dia. in/cm	A in/cm	B in/cm	C in/cm	D in/cm	E in/cm	F in/cm	G in/cm	H in/cm	J in/cm	K in/cm	L in/cm	M in/cm	air consmp. scfm/lpm (p=liters per min.) @60 psig 4.1 bar	frequency* (vib per min) @60 psig 4.1 bar	WT. lbs/kg	
2	2 5.1	10-1/2 26.7	9-3/4 24.8	9 22.9	4 10.2	7-1/2 19.1	-	2 5.1	1/4 0.6	1/4(2) 0.6(2)	1 2.5	3/8-16	11/16 1.7	9.5 269	2200	28 13	

*Frequency data obtained through testing under a no-load condition. Frequency will decline as load is increased.

Larger sizes also available. Call sales for more information.

THE CLEVELAND VIBRATOR COMPANY
 2828 CLINTON AVE. CLEVELAND, OH 44113
 800-221-3298