

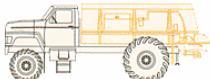

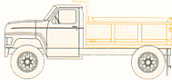

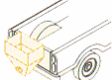


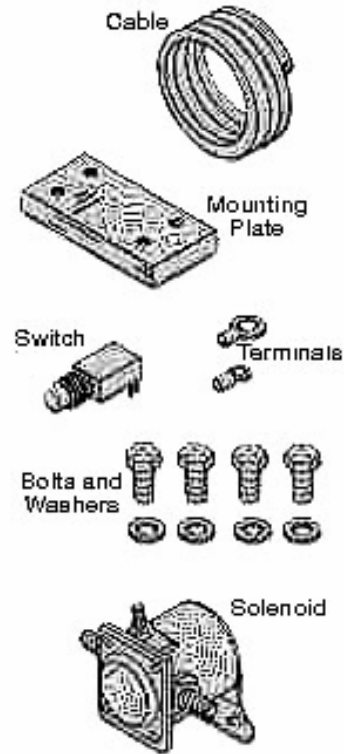


# THE CLEVELAND VIBRATOR COMPANY

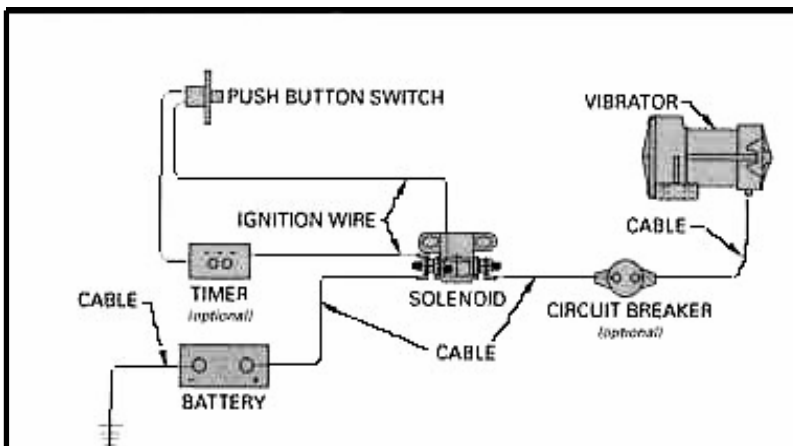
## DC TRUCK VIBRATORS

Model Number	Body Length (feet)	Body Capacity (cubic yards)	Body Style
DC-3200 HT-3200	15-40	15-30	
DC-3200 DC-2700	10-15	8-16	
DC-2500 DC-1600	9-10	5-10	
DC-2500 DC-1600	10-15	7-10	
DC-1600 DC-1000	8-9	2-5	
DC-1000 DC1-400	7-8	1-2	
DC-80	NA	1	

## INSTALLATION KITS



## TYPICAL INSTALLATION



Installation kits are shipped standard with the DC-1000 through DC-3200. Each "DC" installation kit includes 25' of cable (40' with the DC-3200), mounting plate, bolts, washers, switch, solenoid, terminals and installation instructions. Installation kits for the DC-80 and DC1-400 include mounting bolts and washers. Circuit breakers (optional) are recommended for all "DC" vibrators.

The HT-3200 installation kit includes a mounting plate, bolts and washers.

# TRUCK VIBRATOR PERFORMANCE

12 V				
Model	Amps	Max. RPM	Force lbs.	Offset wt.
DC-3200	85	4000	3200	7.0 in.lb.
DC-2700	75	4500	2700	4.7 in.lb.
DC-2500	72	5000	2500	3.5 in.lb.
DC-1600	70	5000	1600	2.3 in.lb.
DC-1100	70	5000	1100	1.5 in.lb.
DC-1000	22	5000	1000	1.4 in.lb.
DC1-400	15	3800	410	1.0 in.lb.
DC-80	5	4000	80	.18 in.lb.

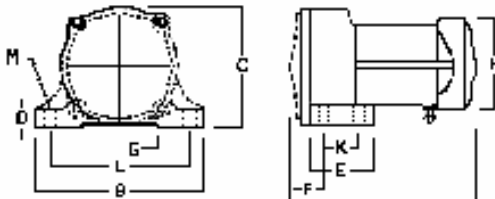
12 V				
Model	Amps	Max. RPM	Force lbs.	Offset wt.
DC-3200	62	4000	3200	7.0 in.lb.
DC-2700	55	4500	2700	4.7 in.lb.
DC-2500	55	5000	2500	3.5 in.lb.
DC-1600	55	5000	1600	2.3 in.lb.
DC-1100	55	5000	1100	1.5 in.lb.
DC-1000	11	5000	1000	1.4 in.lb.
DC1-400	7.5	3800	410	1.0 in.lb.
	<b>Max</b>			
Model	GPM/PSI			
HT-3200	5.6/1500	4000	3200	7.1

## Specifications & Dimensions (inches)

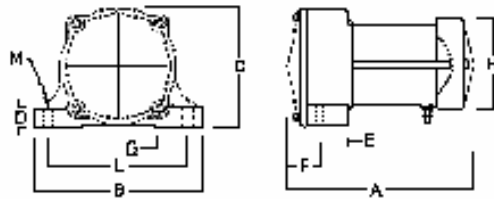
DC	Dimensions								Foot Dim.		Bolt (qty)	weight lbs.
Model	A	B	C	D	E	F	G	H	K	L	M	
DC-3200	10 3/8	9 3/4	6 7/8	1 3/16	3 5/8	2	2 9/16	5 1/4	2	8	5/8 x 1 3/4 (4)	36
DC-2700	10	9 3/4	6 7/8	1 3/16	2 1/4	1 3/4	2 9/16	5 1/4		8	5/8 x 1 3/4 (2)	32
DC-2500	10	9 3/4	6 7/8	1 3/16	2 1/4	1 3/4	2 9/16	5 1/4		8	5/8 x 1 3/4 (2)	31
DC-1600	10	9 3/4	6 7/8	1 3/16	2 1/4	1 3/4	2 9/16	5 1/4		8	5/8 x 1 3/4 (2)	30
DC-1100	10	9 3/4	6 7/8	1 3/16	2 1/4	1 3/4	2 9/16	5 1/4		8	5/8 x 1 3/4 (2)	30
DC-1000	9	9 3/4	6 1/2	1	2 1/4	2 1/4	2 1/2	3 7/8		8	1/2 x 1 1/2 (2)	23
DC1-400	9 1/16	6 3/8	5 9/16	1 1/8	6 1/4	2 3/4	1 15/16	4 1/4	3 3/4	5	3/8 x 1 1/2 (4)	18
DC-80	5 11/16	5	3 7/16	1/2	3	1 13/16	1 9/16	2 11/16	2	4	3/8 x 1 1/4 (4)	5

## Hydraulic

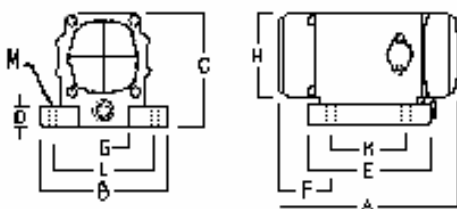
HT-3200	9 11/16	9 3/4	5 3/16	1 1/4	3 3/4	2 1/16	2 1/2	2 7/8	2	8	5/8 x 1 3/4 (4)	30
---------	---------	-------	--------	-------	-------	--------	-------	-------	---	---	-----------------	----



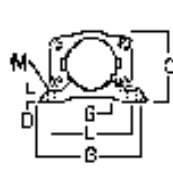
DC-3200



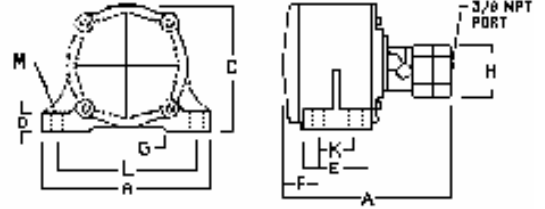
DC-1000, DC-1100, DC-1600, DC-2500, DC-2700



DC1-400



DC-80



HT-3200

## Optional Equipment:

- Cable (by the foot)
- Circuit Breaker
- Timer
- Timer enclosure
- Continuous duty kit (DC-80, DC1-400, DC-1000)

Consult factory for availability.

2828 CLINTON AVENUE ■ CLEVELAND, OH 44113

(800) 221-3298 ■ PHONE: (216) 241-7157 ■ FAX: (216)-241-3480

[www.clevelandvibrator.com](http://www.clevelandvibrator.com) ■ e-mail: [sales@clevelandvibrator.com](mailto:sales@clevelandvibrator.com)