



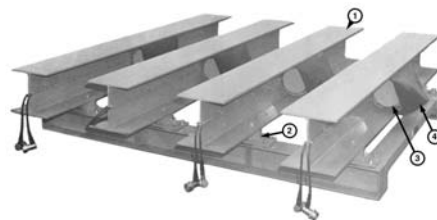
CLEVELAND VIBRATOR LIVE BEAM VIBRATORY TABLE

A senior member of the table family, the Live Beam Table is designed and built primarily for the consolidation of concrete in large forms and moulds.

Ideally suited for long pre-stressed concrete forms, the beams can be spaced apart as much as 10 to 15 feet to handle long, narrow and yet extremely heavy loads. Each beam is mounted on series of heavy duty rubber-in-compression mounts for good stability and vibration isolation. Vibra-

tory energy is imparted by two Rotary Electric Vibrators, totally enclosed, dust tight, continuous duty rated motor vibrators. Each vibrator is fully adjustable by varying the eccentric weight settings. Variable speed controllers for double and multiple beam installations are available.

For more information, contact our fabricated equipment sales department at **800-221-3298**.



THE CLEVELAND VIBRATOR COMPANY
2828 CLINTON AVE. CLEVELAND, OH 44113
800-221-3298