

THE CLEVELAND VIBRATOR CO.

Since 1923, manufacturing quality industrial vibrators and vibratory equipment

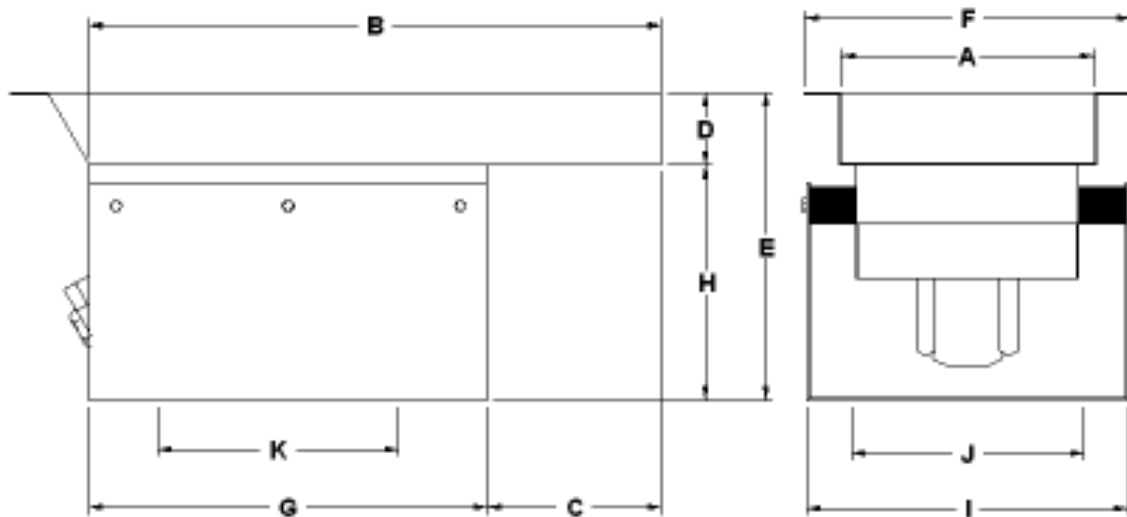


AIR-POWERED FEEDERS

Air Powered Feeders are primarily used in applications where simple, economical control of the feed rate is desirable. Air Powered Feeders are recommended for hazardous duty areas instead offer more expensive electric alternatives. The drive is a dependable air cushioned piston vibrator. The double diameter piston vibrator guarantees starting at any mounting angle without the use of a return spring. An

exhaust muffler is provided to reduce noise level. Further noise reduction can be achieved by porting the exhausting air away from the work area. Coating of the bore to enable operation without lubricated air is available as an option.

Air-powered feeders come in light, medium and heavy-duty models. The capacities range from 1250 lbs. per hour to 15 tons per hour.



CF-A SERIES		LIGHT DUTY AIR POWERED FEEDERS										
UNIT	A TRAY WIDTH	B TRAY LENGTH	C	D	E	F	G	H	I	J	K	CAPACITY
CF-A-100	1-1/2	12	2	1	8	2-1/2	10	7	6-1/4	4	8	1250 lbs/hr
CF-A-125	3	18	6	1-1/2	9	4	12	7-1/2	6-3/4	4-1/2	10	2 tons/hr
CF-A-200	5	24	8	2-1/2	11	6-1/2	16	8-1/2	7-3/4	5-1/2	14	5 tons/hr
CF-A-300	6	30	10	4	16	8	20	12	11-3/4	7-1/2	16	8 tons/hr
CF-A-350	10	36	14	4	17	12	22	13	13-3/4	9-1/4	18	15 tons/hr

Dimensions and capacities are based on standard flat tray.

All dimensions are in inches. Have dimensions certified for installation purposes. Feed rates are based on material weight of 100 lbs. per cubic foot using a standard flat tray.

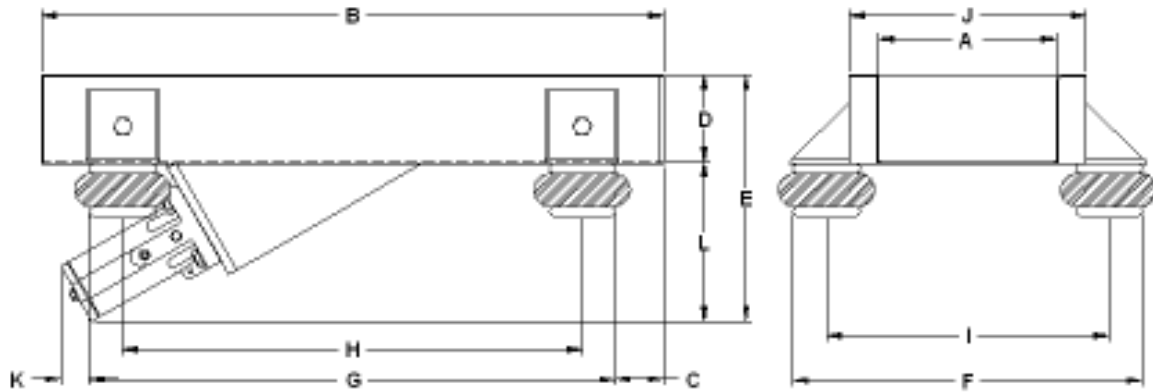
CLEVELAND VIBRATOR COMPANY
2828 Clinton Avenue
Cleveland, Ohio 44113



Phone: 216-241-7157
phone: 1-(800) 221-3298
Fax: 216-241-3480
Email: sales@clevelandvibrator.com

THE CLEVELAND VIBRATOR CO.

Since 1923, manufacturing quality industrial vibrators and vibratory equipment



CF-A SERIES		MEDIUM AND HEAVY DUTY AIR POWERED FEEDERS											
UNIT	A TRAY WIDTH	B TRAY LENGTH	C	D	E	F	G	H	I	J	K	L	CAPACITY
CF-A-400	14	36	6	6	23	25	30	26	21	17	6 1/2	17	1250 lbs/hr
CF-A-500	18	30	11	6	25 1/2	30	24	20	26	22	11	19 1/2	2 tons/hr

AVAILABLE IN WIDE FLAT, VEE SHAPE AND TUBULAR TRAYS

Dimensions and capacities are based on standard flat tray.

All dimensions are in inches. Have dimensions certified for installation purposes. Feed rates are based on material weight of 100 pounds per cubic foot using standard flat tray.

Feed rates are variable with air pressure regulation. Standard air controls: quick acting solenoid valve (115/1/60), lubro control (filter, regulator and lubricator) and 5' hose fittings. Explosion-proof valves are also available. T.P.H. capacity based on 0° down slope. Consult factory for capacities from 0°- 15° downslope.

CLEVELAND VIBRATOR COMPANY
2828 Clinton Avenue
Cleveland, Ohio 44113



Phone: 216-241-7157
phone: 1-(800) 221-3298
Fax: 216-241-3480
Email: sales@clevelandvibrator.com